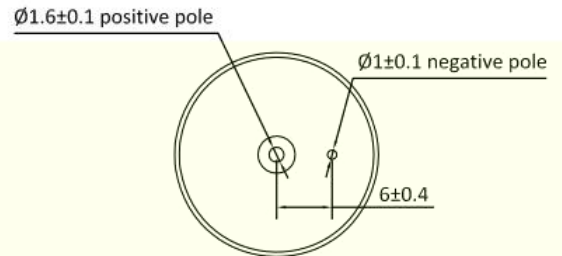
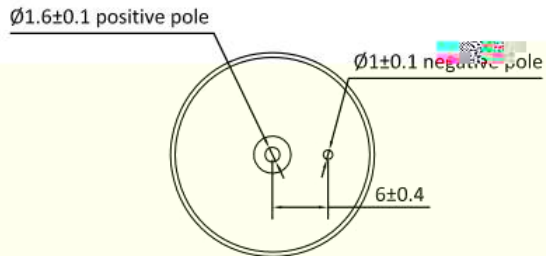
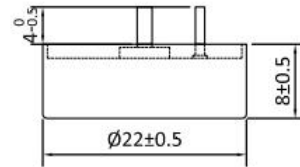
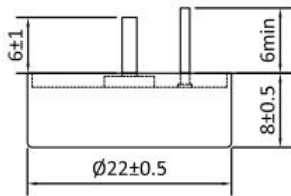


: C1-50 7000 F- 100

22 8





G C .



C

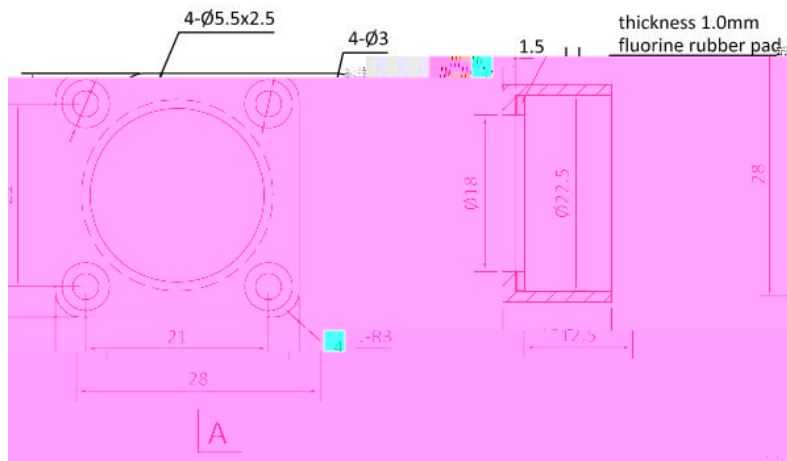
C1

G

C

A

A-A



2

C1

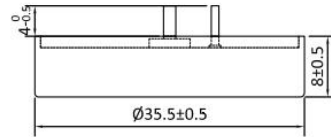
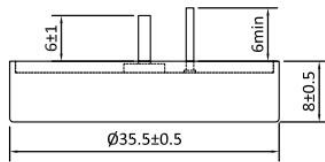
E

C

, C

: 22 12.5


35.5 8



$\phi 1.6 \pm 0.1$  positive

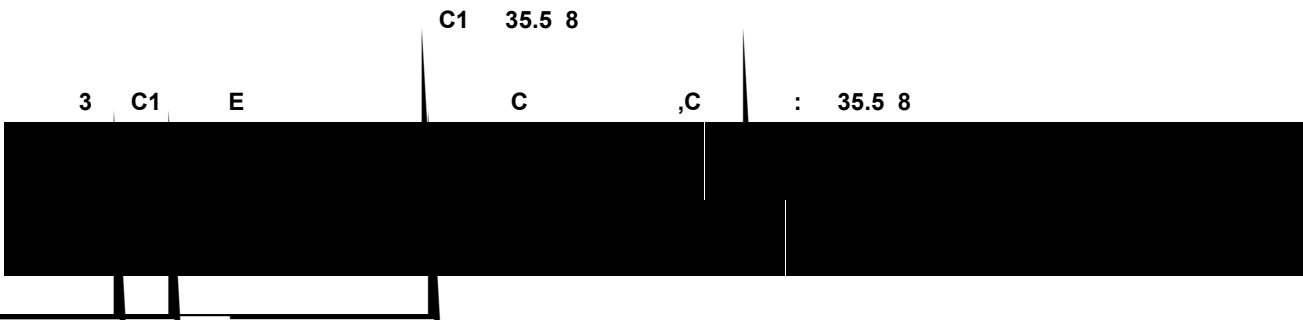
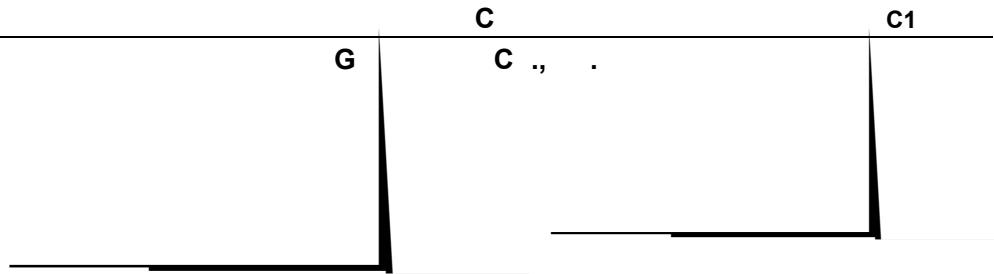


C1 35.5 8

( A )

C1 35.5 8

( B )





C

C1

G

C, .

E

E C		
	C	

C		
	C	